



COMMAX Co.,Ltd.

513-11, Sangdaewon-dong, Jungwon-gu, Seongnam-si, Gyeonggi-do, Korea
Int'l Business Dept. : Tel.; +82-31-7393-540~550 Fax.; +82-31-745-2133
Web site : www.commax.com

Printed In Korea/ 2010.03.101

User Manual

DOOR CAMERA DRC-4BH/4CH



COMMAX Co.,Ltd.



COMMAX Co.,Ltd.

513-11, Sangdaewon-dong, Jungwon-gu, Seongnam-si, Gyeonggi-do, Korea
Int'l Business Dept. : Tel.; +82-31-7393-540~550 Fax.; +82-31-745-2133
Web site : www.commax.com

Printed In Korea/ 2010.03.101

User Manual

DOOR CAMERA DRC-4BH/4CH



COMMAX Co.,Ltd.

6. Specification

Model No.	DRC-4BH		DRC-4CH		
Rated voltage/Current consumption	DC 12V (Supplied to monitor)		DC 12V (Supplied to monitor)		
Wiring(Main Unit/Switch)	4-wire system (polar) / 2-wire system (non-polar)		4-wire system (polar) / 2-wire system (non-polar)		
CCD	1/3" (Solid CCD)		C.C.D (Solid state imaging device)		
Communication	Simultaneous communication		Voice switching		
Broadcasting	EIA(15.734KHz/60Hz) /CCIR(15.625KHz/50Hz)		NTSC Standard		
Horizontal/vertical scan frequency	0 Lux(Up to 300mm from the front of the camera)		0.1 Lux (Up to 300mm from the front of the camera)		
Lighting	Infrared LED built-in		built-in white LED (operated at a night time)		
Camera angle	Horizontal 68°, vertical 55°		Horizontal 75°, vertical 55°		
Angle adjustment	Upward 13°, downward 13°		Upward 13°, downward 13°		
Operation temperature	-10°C ~ + 50°C		-10°C ~ + 50°C		
Weight (g)	680g		680g		
Dimensions (mm)	116(W) x 169(H) x 42.5(D)		116(W) x 169(H) x 42.5(D)		
Transmission distance (TIV Cable)	Diameter(ϕ)	0.5	0.65	0.8	1
	group(M)	28	50	70	115

9

Contents

1. Introduction	3
2. Important Safeguard	4
3. Overview	5
4. Wiring And Installation	7
5. Package	8
6. Specification	9

2

6. Specification

Model No.	DRC-4BH		DRC-4CH		
Rated voltage/Current consumption	DC 12V (Supplied to monitor)		DC 12V (Supplied to monitor)		
Wiring(Main Unit/Switch)	4-wire system (polar) / 2-wire system (non-polar)		4-wire system (polar) / 2-wire system (non-polar)		
CCD	1/3" (Solid CCD)		C.C.D (Solid state imaging device)		
Communication	Simultaneous communication		Voice switching		
Broadcasting	EIA(15.734KHz/60Hz) /CCIR(15.625KHz/50Hz)		NTSC Standard		
Horizontal/vertical scan frequency	0 Lux(Up to 300mm from the front of the camera)		0.1 Lux (Up to 300mm from the front of the camera)		
Lighting	Infrared LED built-in		built-in white LED (operated at a night time)		
Camera angle	Horizontal 68°, vertical 55°		Horizontal 75°, vertical 55°		
Angle adjustment	Upward 13°, downward 13°		Upward 13°, downward 13°		
Operation temperature	-10°C ~ + 50°C		-10°C ~ + 50°C		
Weight (g)	680g		680g		
Dimensions (mm)	116(W) x 169(H) x 42.5(D)		116(W) x 169(H) x 42.5(D)		
Transmission distance (TIV Cable)	Diameter(ϕ)	0.5	0.65	0.8	1
	group(M)	28	50	70	115

9

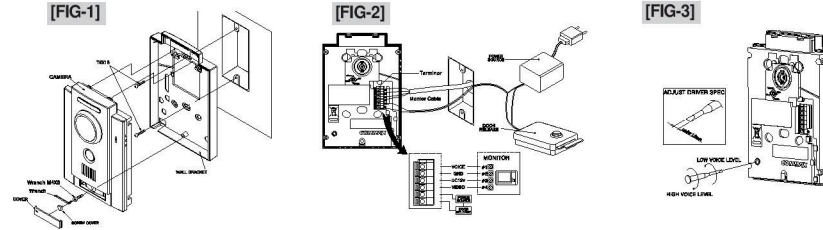
Contents

1. Introduction	3
2. Important Safeguard	4
3. Overview	5
4. Wiring And Installation	7
5. Package	8
6. Specification	9

2

4. Wiring And Installation

1. Fix it by adjusting the hole in the installation wall and bracket hole.(SCREW T4×18)[FIG-1]
2. Wire the residence monitor cables as shown in the figure.[FIG-2](#1:VOICE, #2:GND, #3:DC12V, #4:VIDEO)
3. Wire the door release as shown in the figure.[FIG-2](#5,#6)
4. Fix it by using screw (M4×8) and then put on the rubber-cap.[FIG-1]
5. Put on the name card cover.[FIG-1]



7

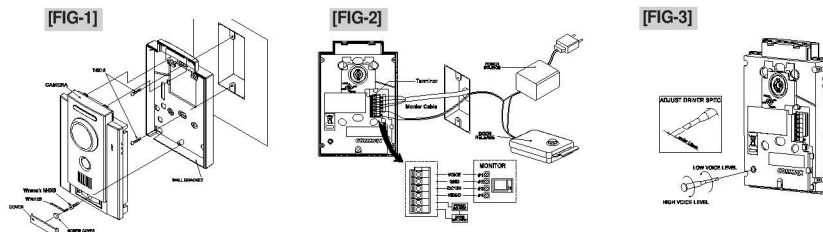
2. Important Safeguard

- ▲ **Damage Requiring Service:** This equipment from the power source and source and refer servicing to qualified service personnel under the following conditions:
 - ⊗ when the power is damaged,
 - ⊗ if liquid has been spilled or objects have fallen into the unit
 - ⊗ if the equipment has been exposed to rain or water,
 - ⊗ if the equipment has been dropped or otherwise damaged,
 - ⊗ when the equipment exhibits a distinct change in performance– this indicates a need for service.
- ▲ **Water and Moisture:** Do not use this product near water, for example, near a bath tub, wash bowl, kitchen sink, or laundry tub, in a wet basement, or near a swimming pool, and the like.
- ▲ **Accessories:** The product may fall, causing serious injury to a child or adult, and serious damage to the appliance. Any mounting of the manufacture's instructions, and should use a mounting accessory recommended by the manufacturer.
- ▲ **Object and Liquid Entry:** Never push objects of any kind into this product through openings as they may touch dangerous voltage points or short-out parts that could result in a fire or electric shock. Never spill liquid of any kind on the product.
- ▲ **Lightning:** For added protection for this product before a lightning storm, or when it is left un attached and un used for long periods of time, unplug it from the wall outlet and disconnect the other system. This will prevent damage to the product due to lightning and power-line surges. If you live in an ared heavily prone to lightning storms, it is recommended that you invest in power-line, telephone-line, RFcable and actuator/ polarization surge protectors to protect your appliance system from possiple damage

4

4. Wiring And Installation

1. Fix it by adjusting the hole in the installation wall and bracket hole.(SCREW T4×18)[FIG-1]
2. Wire the residence monitor cables as shown in the figure.[FIG-2](#1:VOICE, #2:GND, #3:DC12V, #4:VIDEO)
3. Wire the door release as shown in the figure.[FIG-2](#5,#6)
4. Fix it by using screw (M4×8) and then put on the rubber-cap.[FIG-1]
5. Put on the name card cover.[FIG-1]



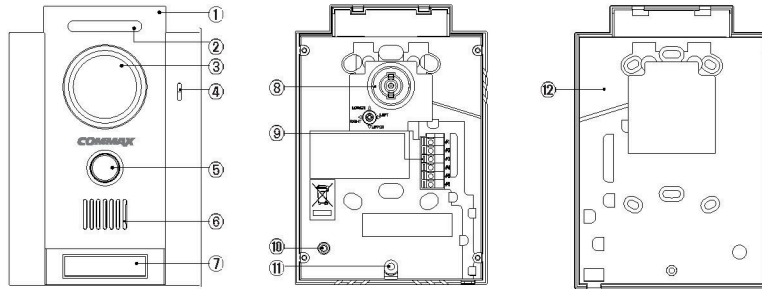
7

2. Important Safeguard

- ▲ **Damage Requiring Service:** This equipment from the power source and source and refer servicing to qualified service personnel under the following conditions:
 - ⊗ when the power is damaged,
 - ⊗ if liquid has been spilled or objects have fallen into the unit
 - ⊗ if the equipment has been exposed to rain or water,
 - ⊗ if the equipment has been dropped or otherwise damaged,
 - ⊗ when the equipment exhibits a distinct change in performance– this indicates a need for service.
- ▲ **Water and Moisture:** Do not use this product near water, for example, near a bath tub, wash bowl, kitchen sink, or laundry tub, in a wet basement, or near a swimming pool, and the like.
- ▲ **Accessories:** The product may fall, causing serious injury to a child or adult, and serious damage to the appliance. Any mounting of the manufacture's instructions, and should use a mounting accessory recommended by the manufacturer.
- ▲ **Object and Liquid Entry:** Never push objects of any kind into this product through openings as they may touch dangerous voltage points or short-out parts that could result in a fire or electric shock. Never spill liquid of any kind on the product.
- ▲ **Lightning:** For added protection for this product before a lightning storm, or when it is left un attached and un used for long periods of time, unplug it from the wall outlet and disconnect the other system. This will prevent damage to the product due to lightning and power-line surges. If you live in an ared heavily prone to lightning storms, it is recommended that you invest in power-line, telephone-line, RFcable and actuator/ polarization surge protectors to protect your appliance system from possiple damage

4

3. Overview

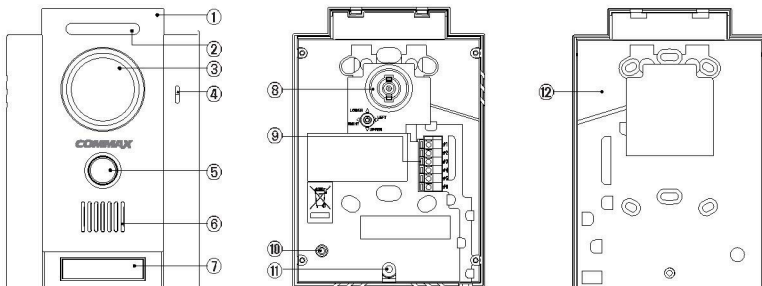


5

No.	Name	Details
1	Front panel	
2	LED	Since it acts as lighting at night, it provides better picture quality.
3	Camera lens	It delivers images. (Make sure to keep it clean to prevent dust)
4	Microphone	It delivers voices at a time of communication with residences.
5	Call button	It is pressed to call a residence.
6	Speaker	It delivers voice from a residence.
7	Name Card	
8	Angle fiell of view camera	Use it to adjust the angle of the view of visitors according to installation environment.
9	Monitor & Door release connection terminal	It connects monitor (careful about polarity) to a door release.
10	Vdume Contrd	
11	Screw hole	
12	Wall bracket	

6

3. Overview



5

No.	Name	Details
1	Front panel	
2	LED	Since it acts as lighting at night, it provides better picture quality.
3	Camera lens	It delivers images. (Make sure to keep it clean to prevent dust)
4	Microphone	It delivers voices at a time of communication with residences.
5	Call button	It is pressed to call a residence.
6	Speaker	It delivers voice from a residence.
7	Name Card	
8	Angle fiell of view camera	Use it to adjust the angle of the view of visitors according to installation environment.
9	Monitor & Door release connection terminal	It connects monitor (careful about polarity) to a door release.
10	Vdume Contrd	
11	Screw hole	
12	Wall bracket	

6


1. Introduction


Your unit is designed so it can be flush mounted on the wall or used. When flush mounted on the wall, the stand permits you to the unit for an angular unit view. The model number is located on the bottom and record the serial number in the space provided below(available). Refer to these numbers whenever you call upon your COMMAX dealer regarding this product.

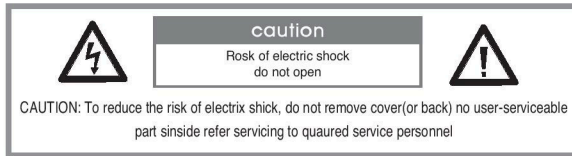
Model No. _____

Serial No. _____

To prevent fire or shock hazard, do not expose the unit to rain or moisture.

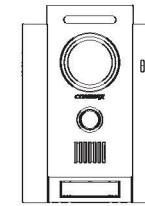
 This symbol is intended to alert the user to the presence of uninsulated "dangerous Voltage" within the product's enclosure that may be of sufficient magnitude to constitute a risk of electric shock to persons.

 This symbol is intended to alert the user to the presence of important operating and maintenance(servicing) instructions in the literature accompanying the appliance

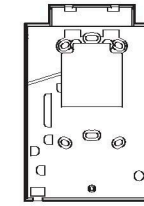


3

5. Package



camera



wall bracket



User's Guide



Camera Fixing Screw
WRENCH SCREW M4X8 BK



Mounting Screw
PAN HAED SCREW T4X18



Screw
cover



Wrench
Hexagon (#3)

8


1. Introduction

Your unit is designed so it can be flush mounted on the wall or used. When flush mounted on the wall, the stand permits you to the unit for an angular unit view. The model number is located on the bottom and record the serial number in the space provided below(available). Refer to these numbers whenever you call upon your COMMAX dealer regarding this product.

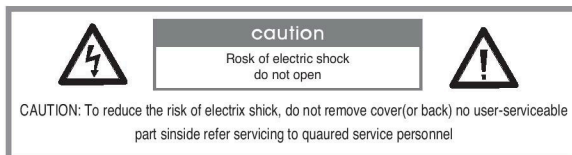
Model No. _____

Serial No. _____

To prevent fire or shock hazard, do not expose the unit to rain or moisture.

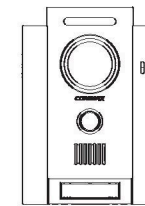
 This symbol is intended to alert the user to the presence of uninsulated "dangerous Voltage" within the product's enclosure that may be of sufficient magnitude to constitute a risk of electric shock to persons.

 This symbol is intended to alert the user to the presence of important operating and maintenance(servicing) instructions in the literature accompanying the appliance

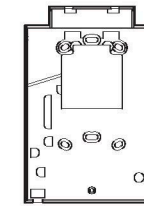


3

5. Package



camera



wall bracket



User's Guide



Camera Fixing Screw
WRENCH SCREW M4X8 BK



Mounting Screw
PAN HAED SCREW T4X18



Screw
cover



Wrench
Hexagon (#3)

8

Memo

10

Memo

10